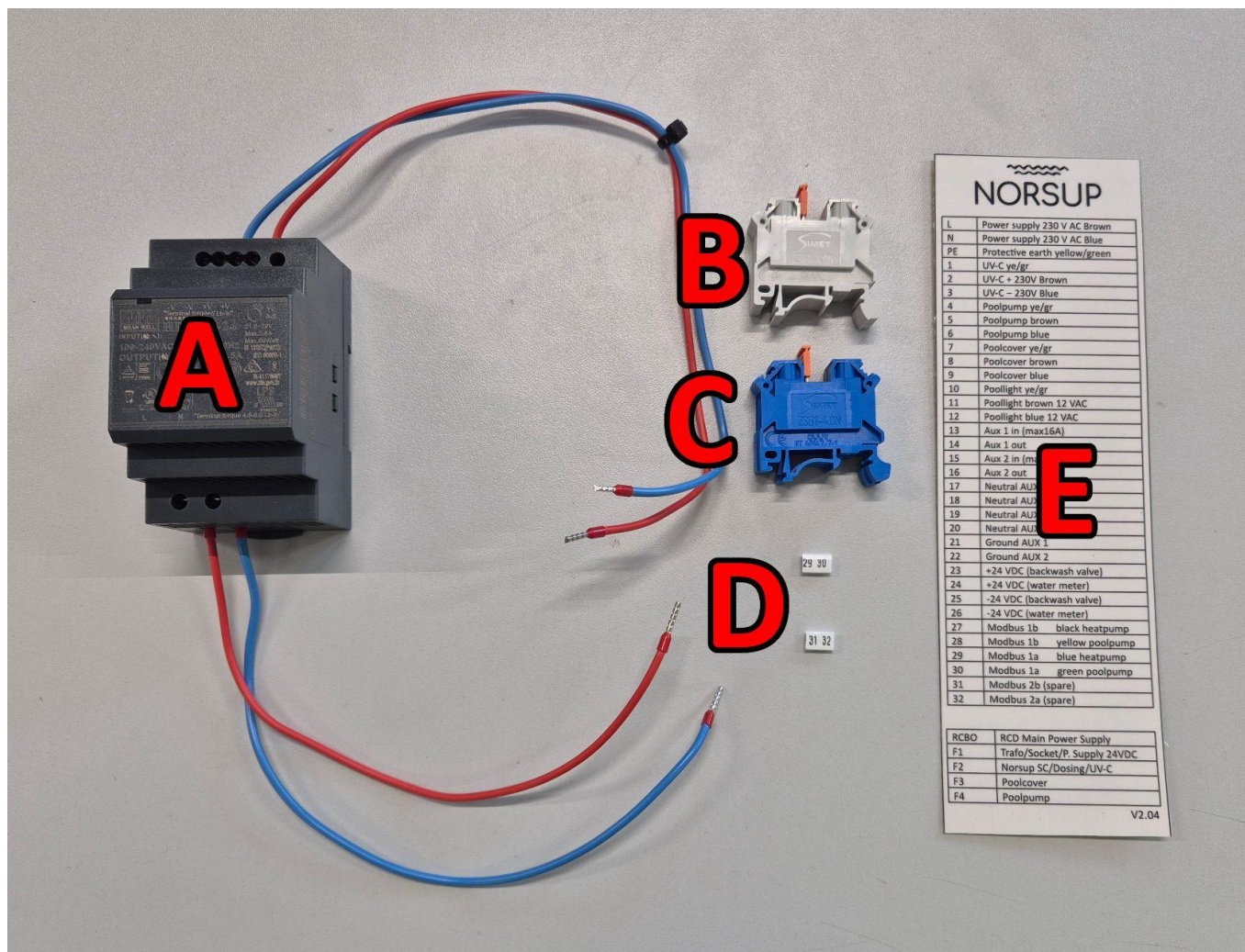


Norsup One Box

Power Supply 24 VDC KIT



Components:

- A. Power supply 24VDC with wires (x1)
- B. Terminal connectors grey (x2)
- C. Terminal connectors blue (x2)
- D. Markings(29-32)
- E. Label (x1)

Tools:

1. Small flat head screwdriver
2. Phillips head screwdriver



Disclaimer

Before doing any modifications disconnect power from the device and make sure that any charge left is dissipated by leaving device unplugged for at least 30 seconds.

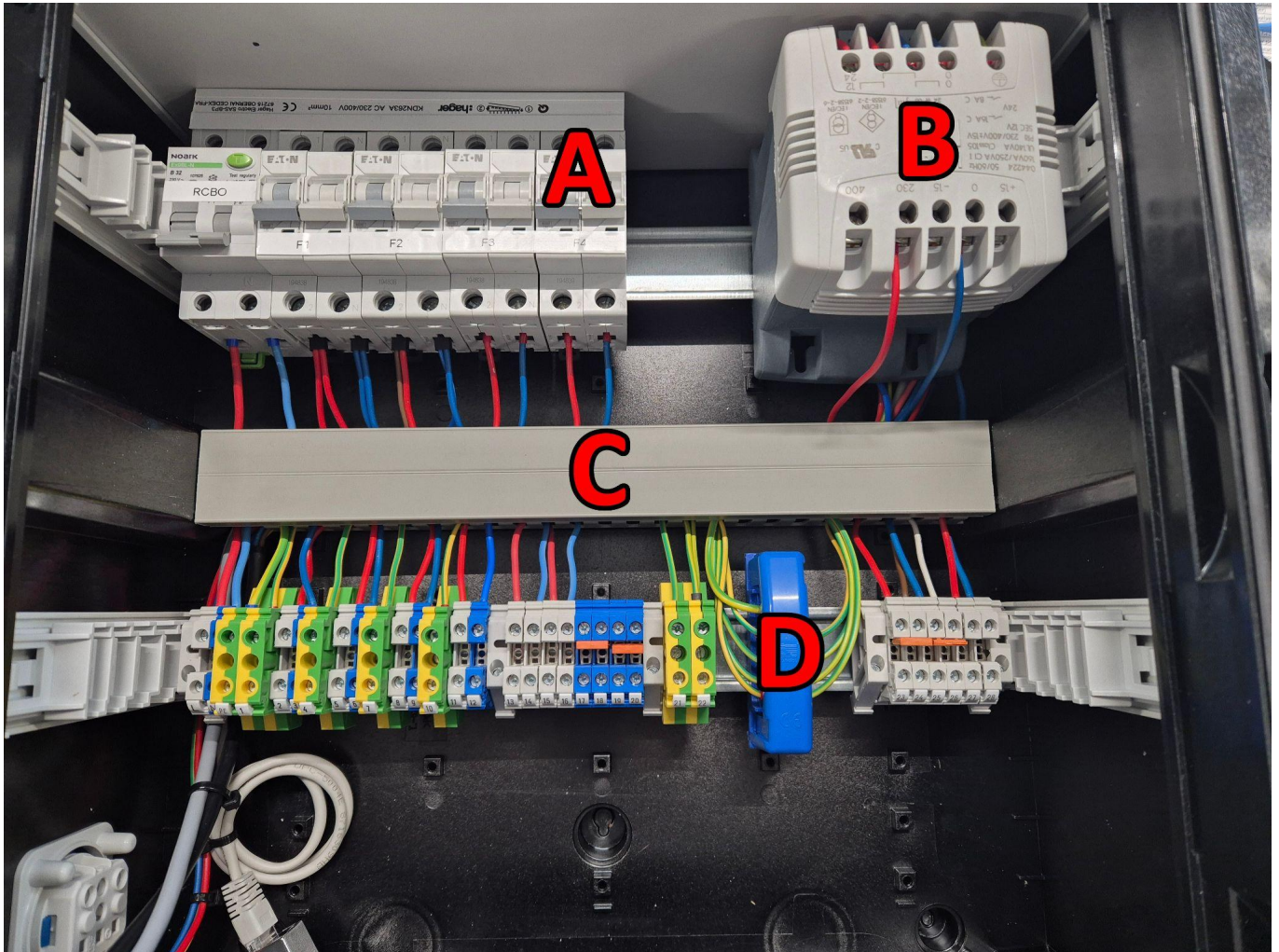
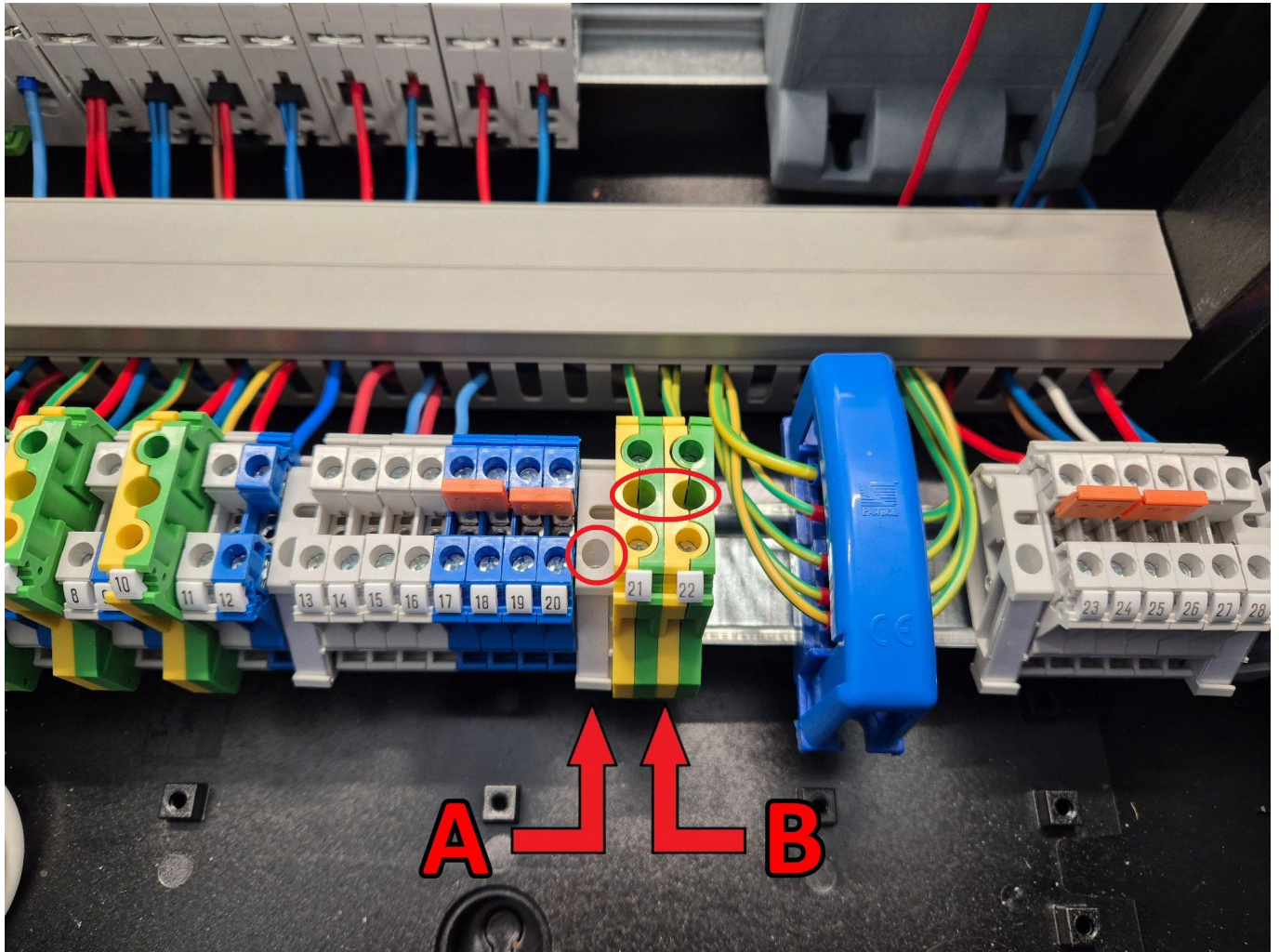


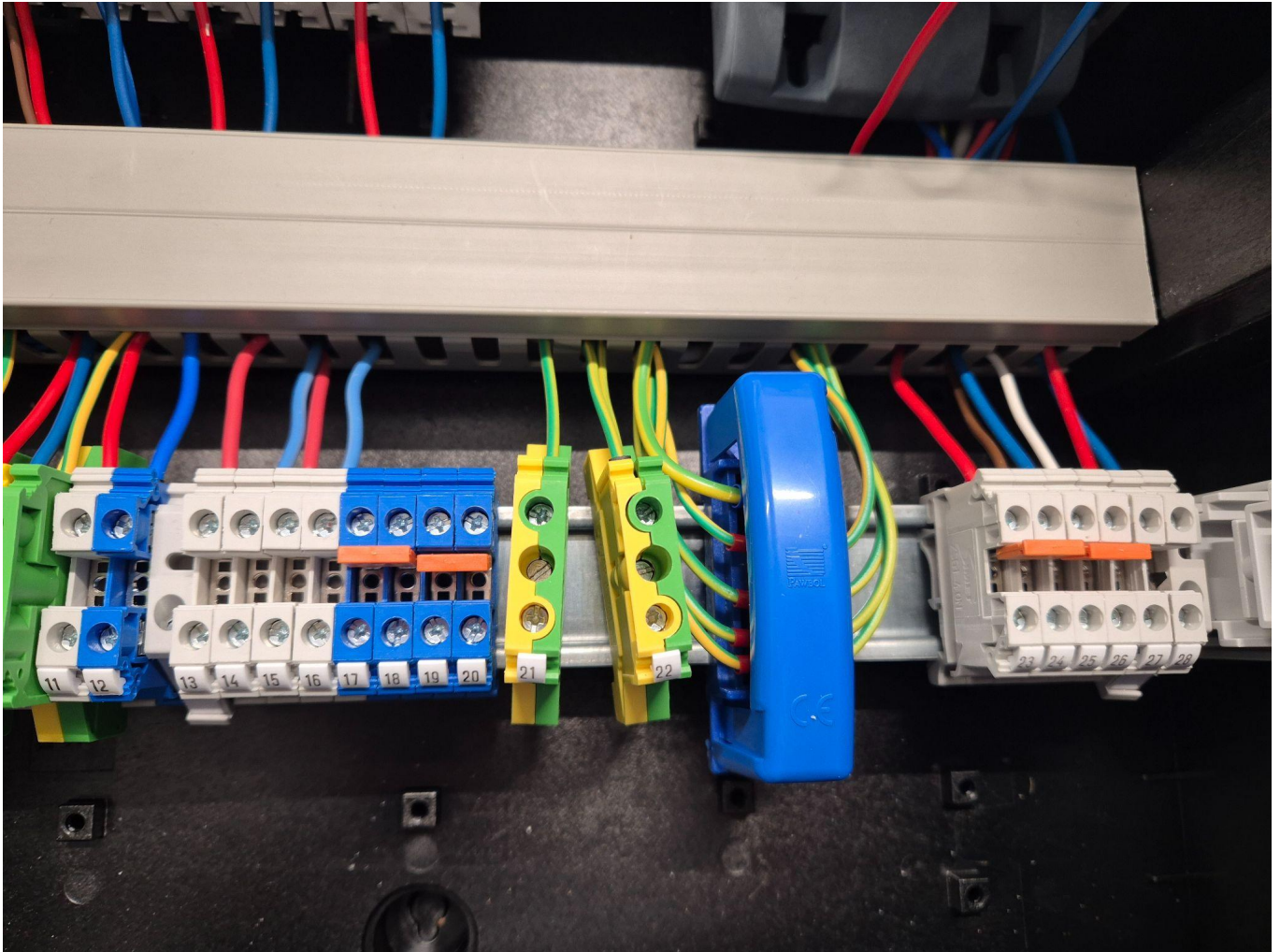
Photo shows default state of the Norsup One Box.

- A. Miniature circuit breaker
- B. Transformer 230VAC/12VAC
- C. Cable channel
- D. Protective earth terminal



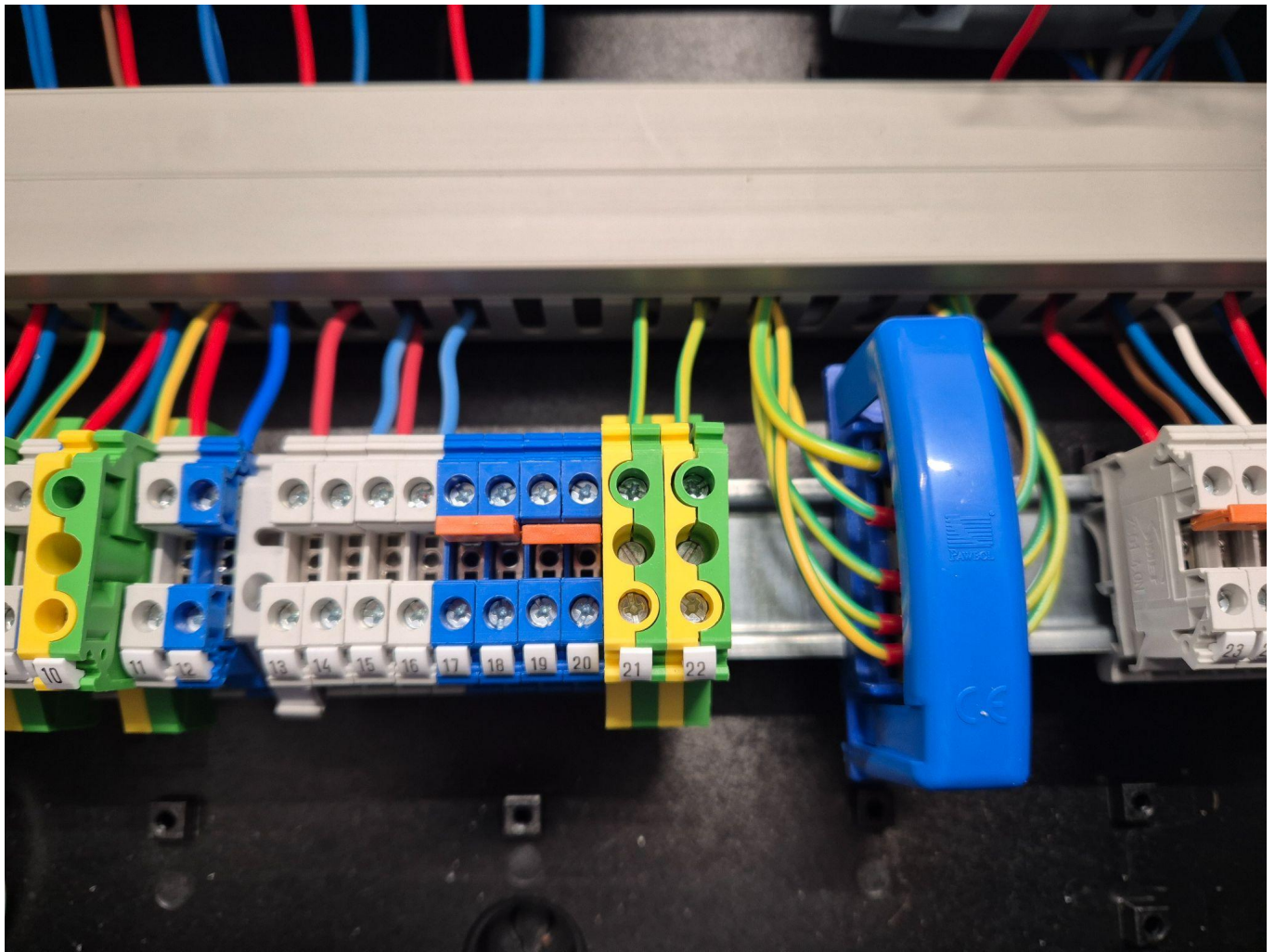
First, loosen terminal connector middle screws number 21 and 22 (marked on photo as B).

Second, unscrew the end bracket (marked as A) situated between terminal connectors number 20 and 21 then remove it.

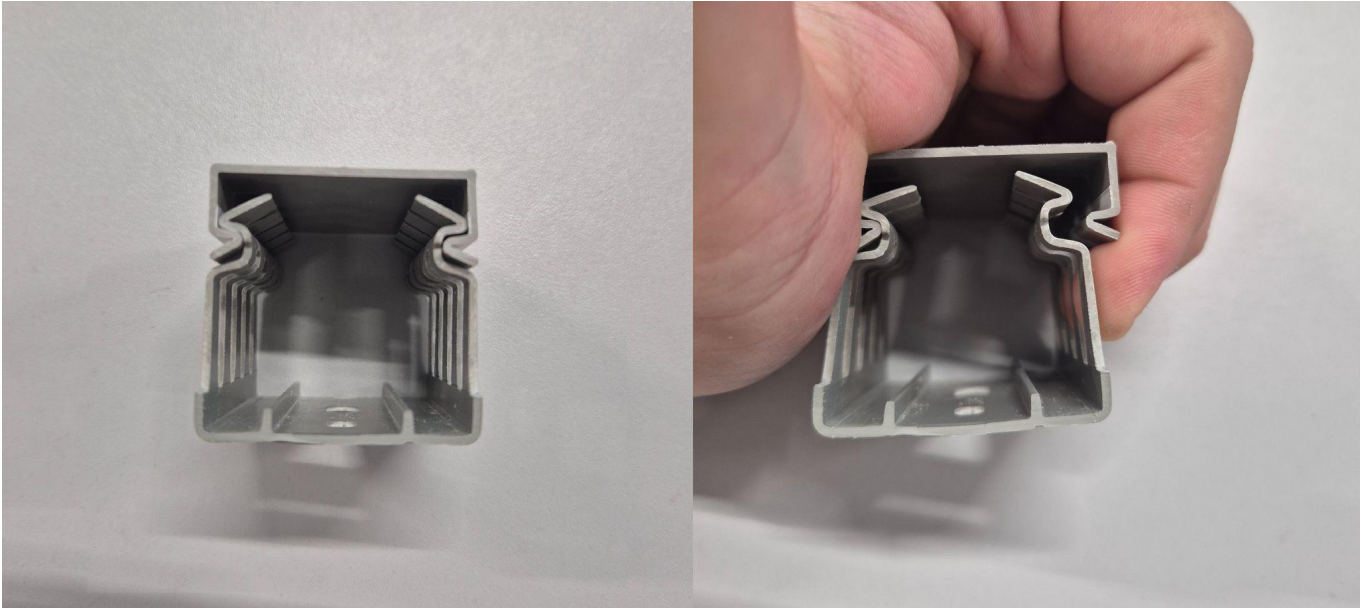


Terminal connectors should look like photo above.

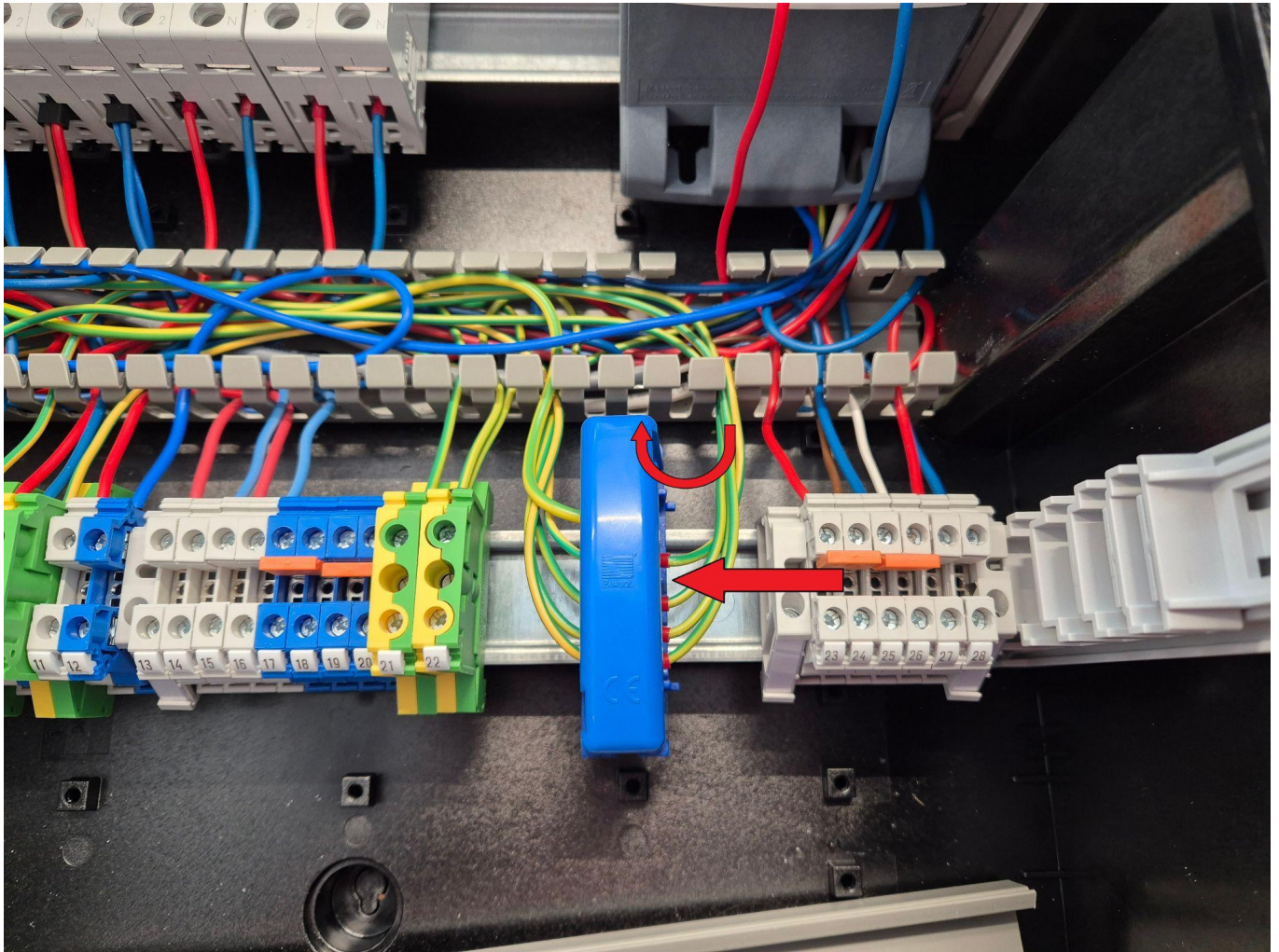
Next, slide terminals number 21 and 22 close to terminal number 20 and secure them by screwing middle screws.



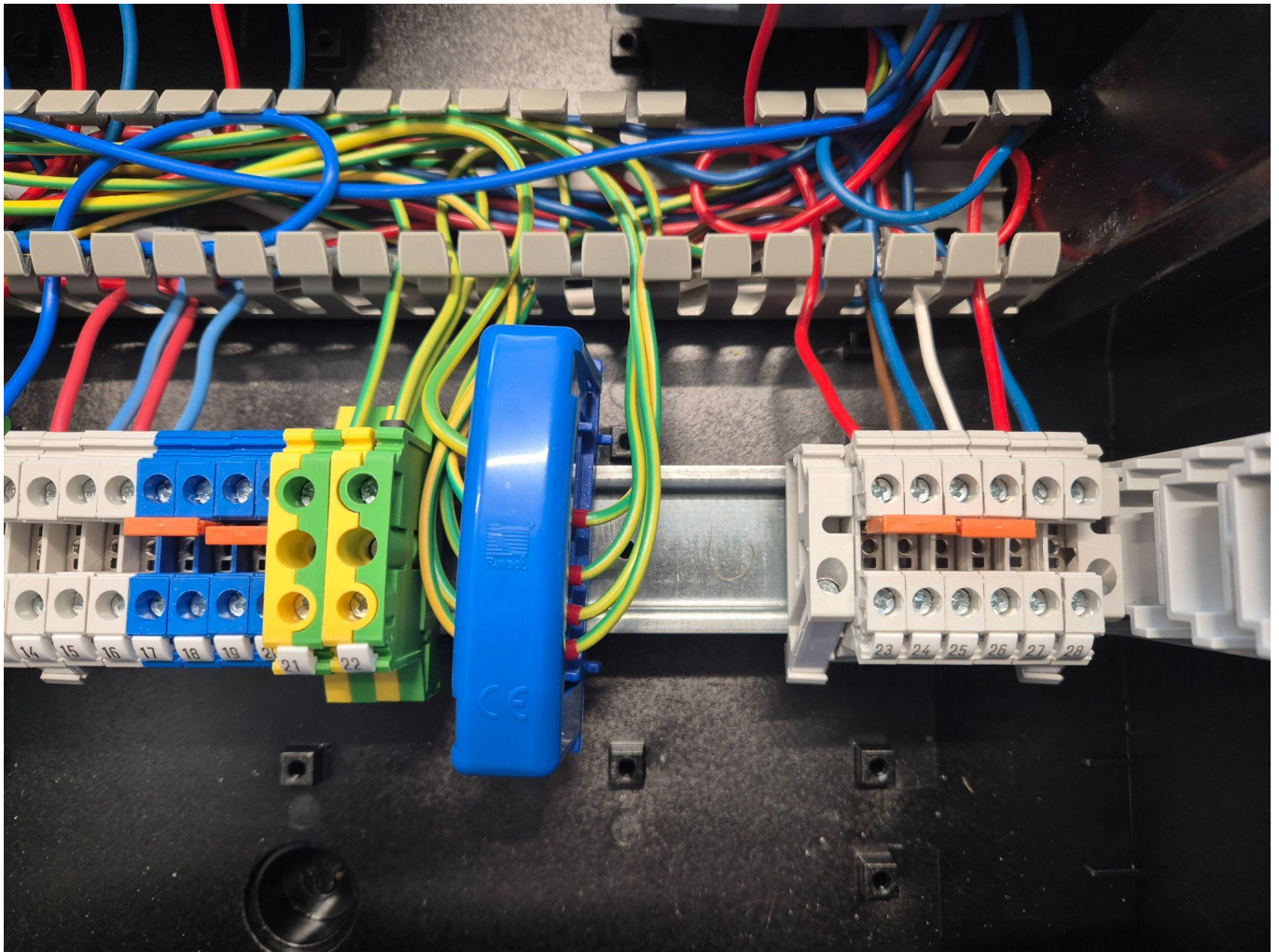
Changes made should look like photo above.



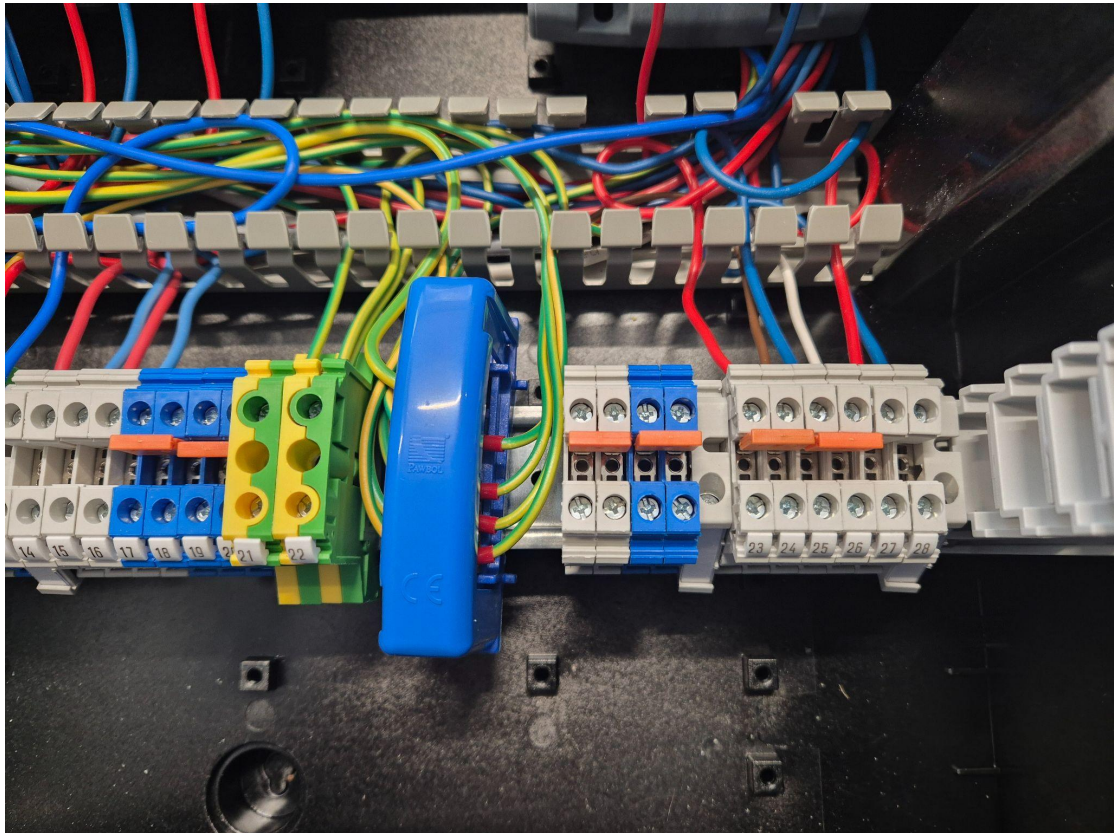
The next step is to remove lid from the cable channel by squeezing sides of the channel, the lid can be lifted and removed. See photo above.



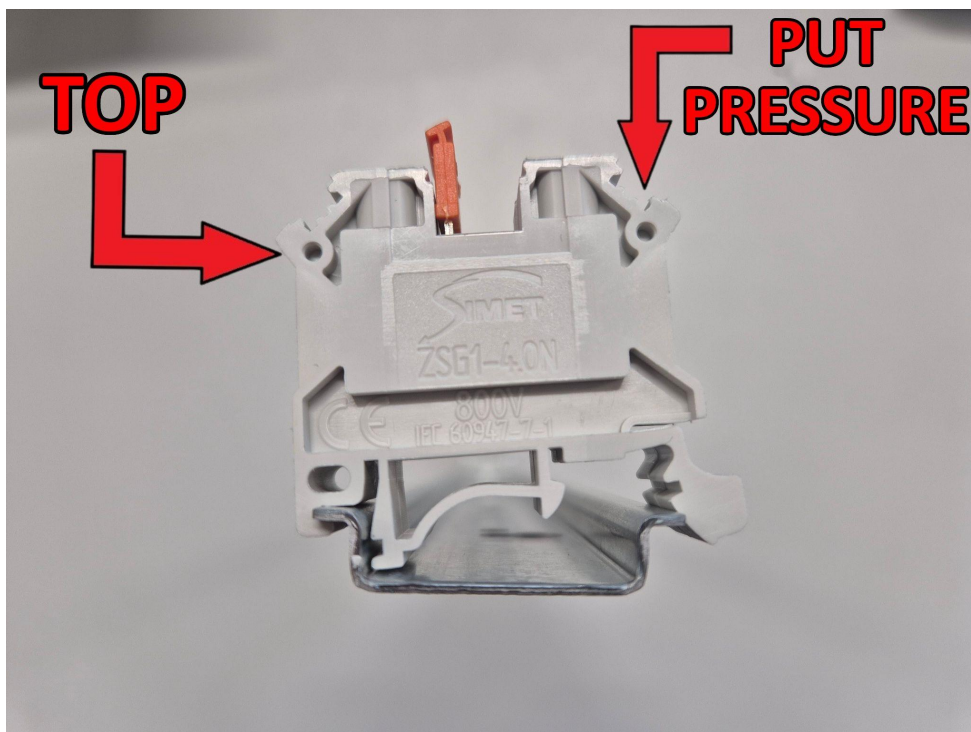
Next step is to slide protective earth terminal to the left and take right side wires out of the cable channel ribs and move them to the left.



Changes made should look like photo above.

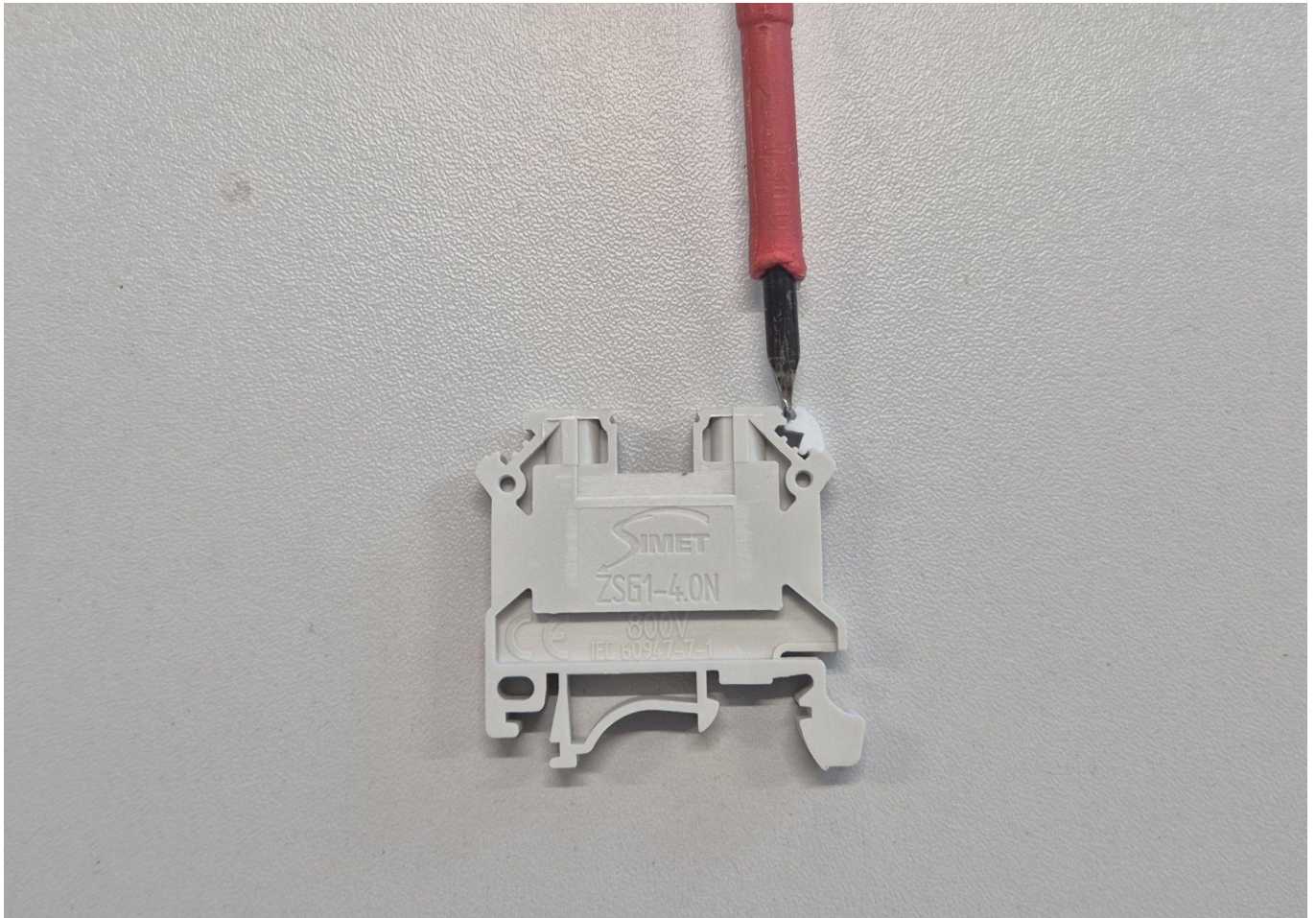


The next step is to install terminal connectors (grey x 2 and blue x2) as shown on the photo above.



It is important to keep correct orientation when placing them.

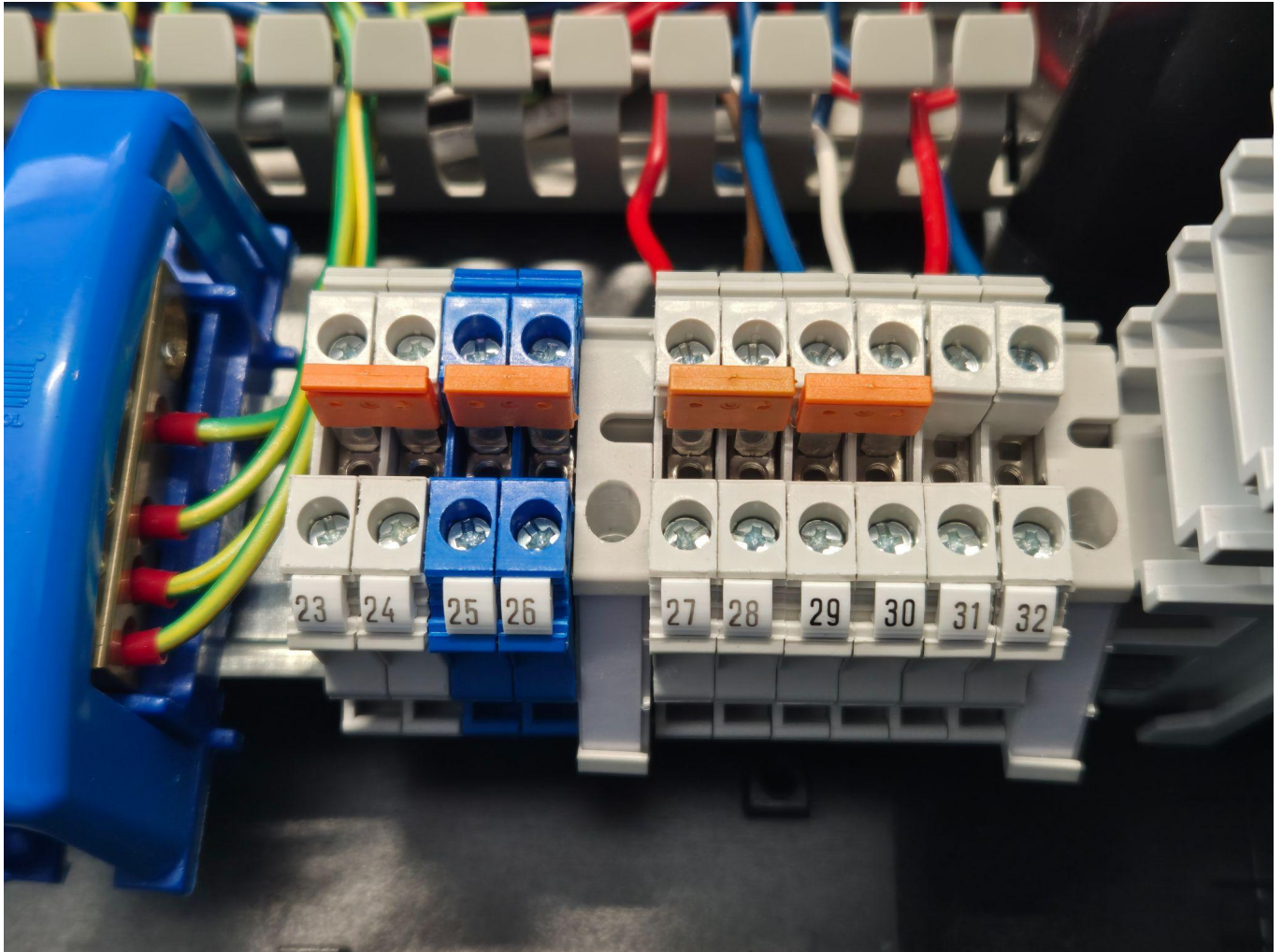
Hook the top on the lip of the rail then press bottom until terminal connectors snap in place.



The next step is to number newly added splice terminals.

To remove markings wedge flat head screwdriver between plastic and markings

After that remove markings from terminal connectors number 23 to 28.



To reattach markings onto terminal connectors squeeze them in place with the help of the flat head screwdriver.

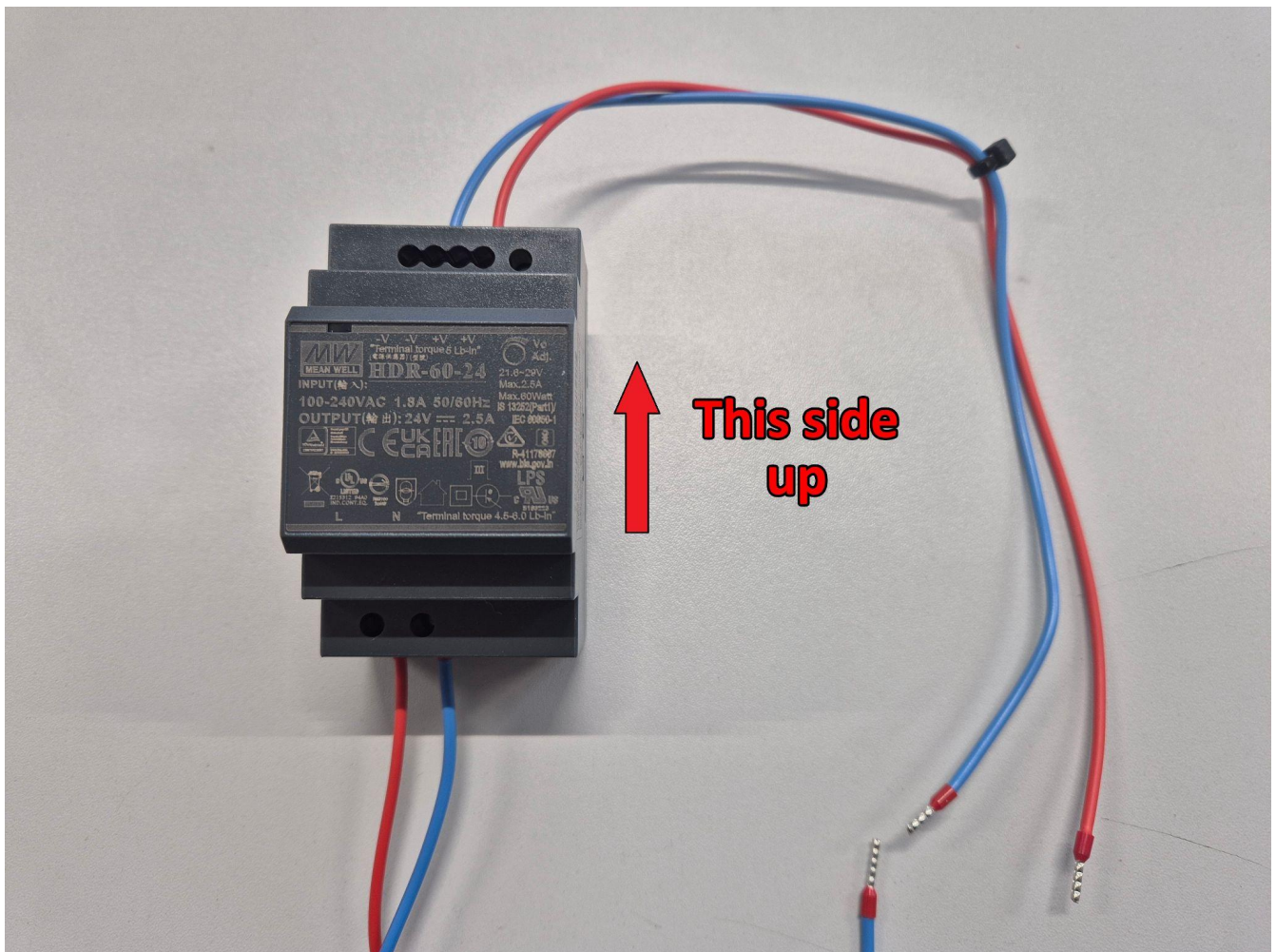
Photo above shows correct placement of the number markers on the terminal connectors.

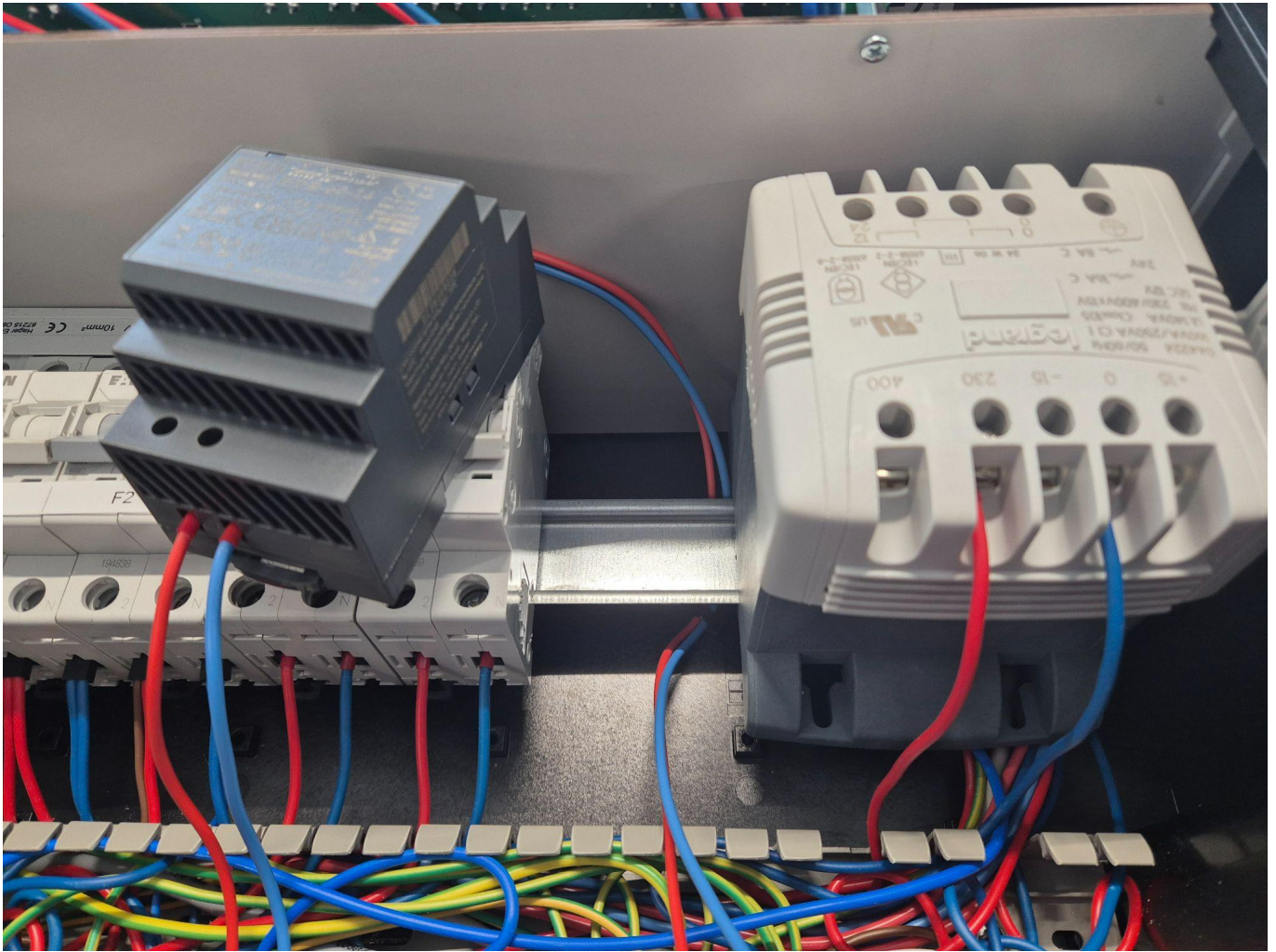


Disclaimer

The power supply has 230 VAC (markings L and N) at the input and 24 VDC (markings V- and V+) at the output.

Make sure the device is placed and connected correctly.

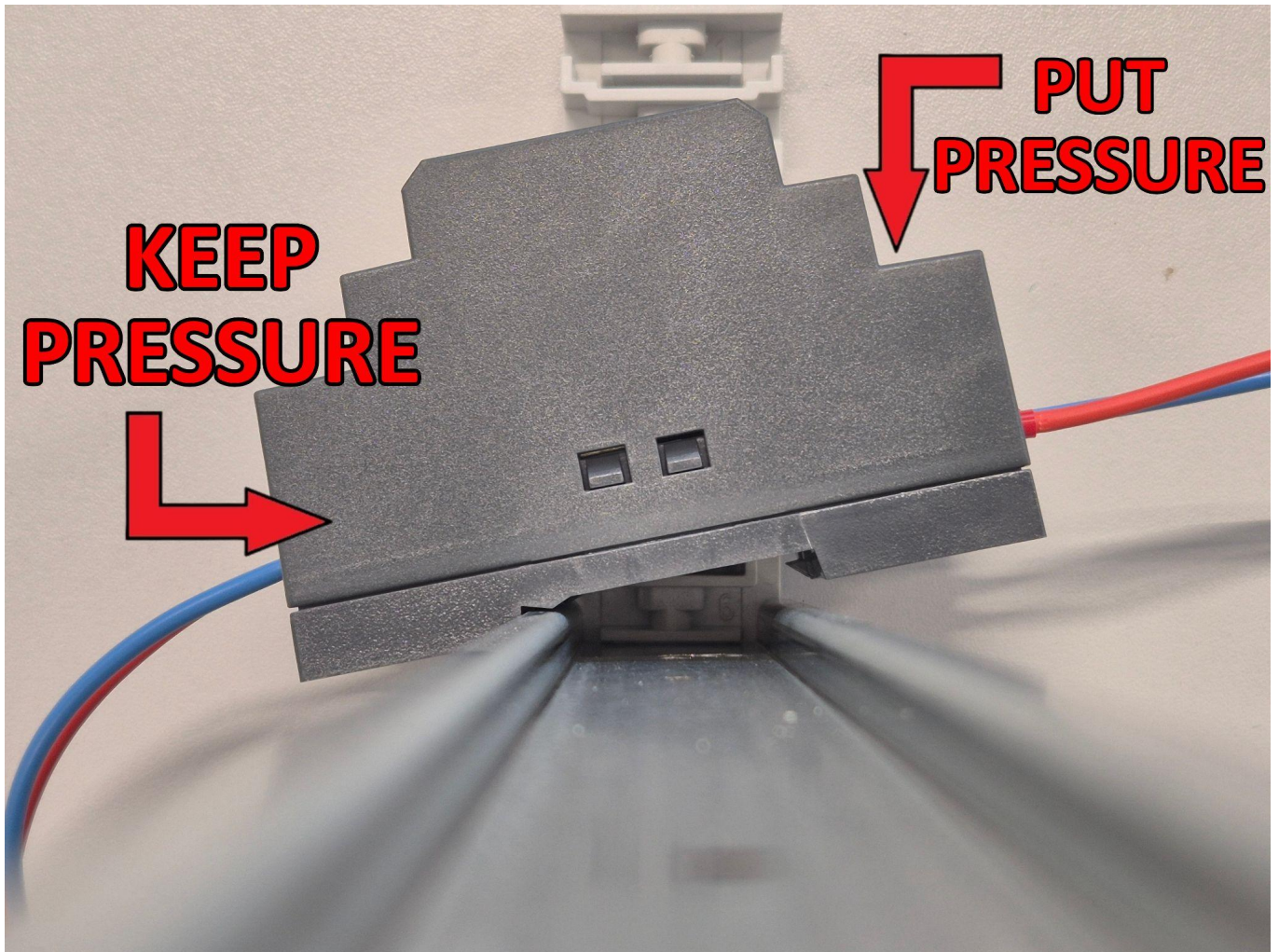




The power supply should be placed between miniature circuit breakers and transformer 230VAC/12VAC

Important that the 24 VDC wires which comes from the top of power supply should loop around the DIN rail the device is mounted on.

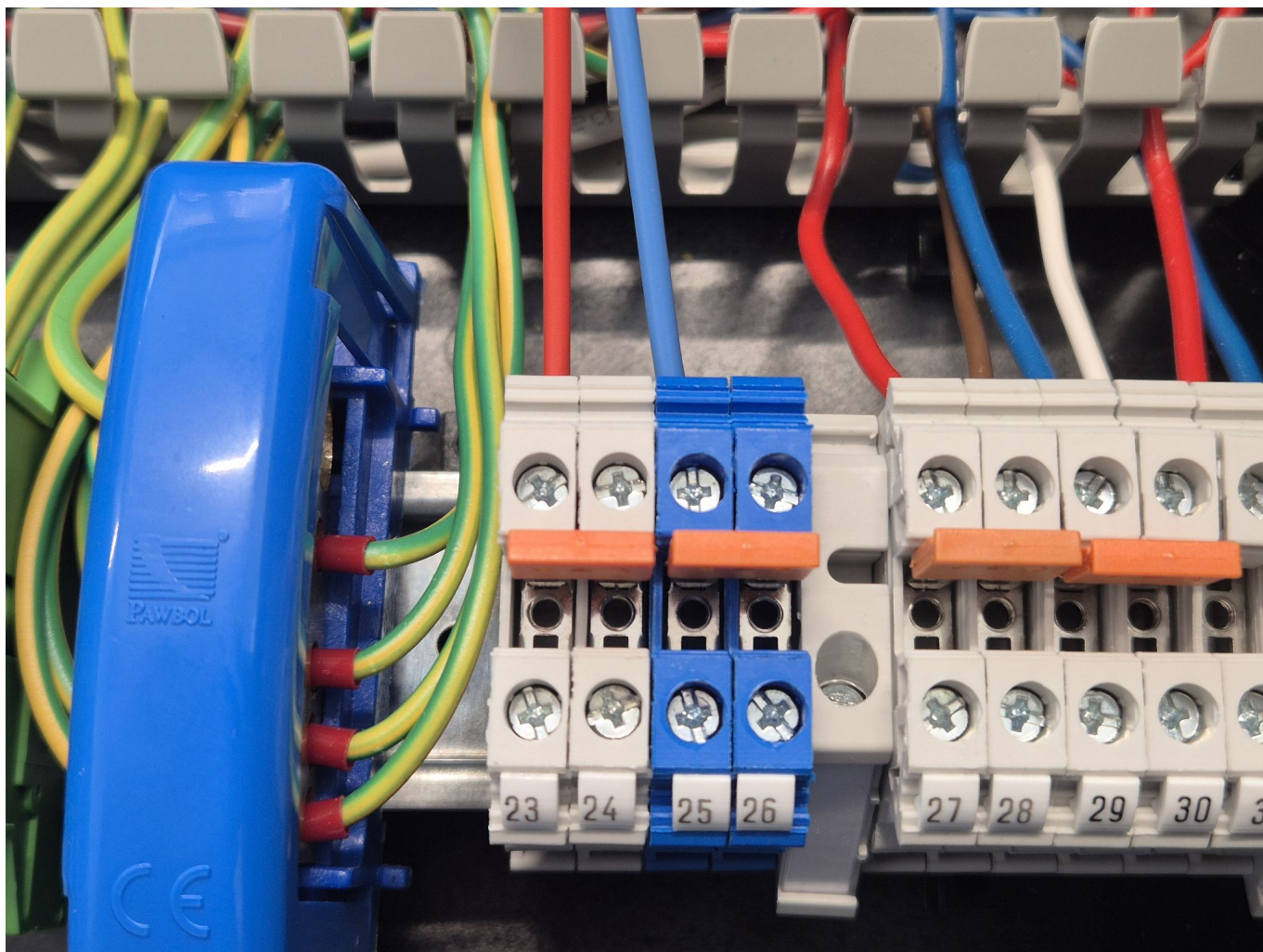
See photo above.



Hook the top on the lip of the rail, while keeping the top side pressed against DIN rail put pressure on bottom of the power supply until audible click sound can be heard.



Changes made should look like photo above.

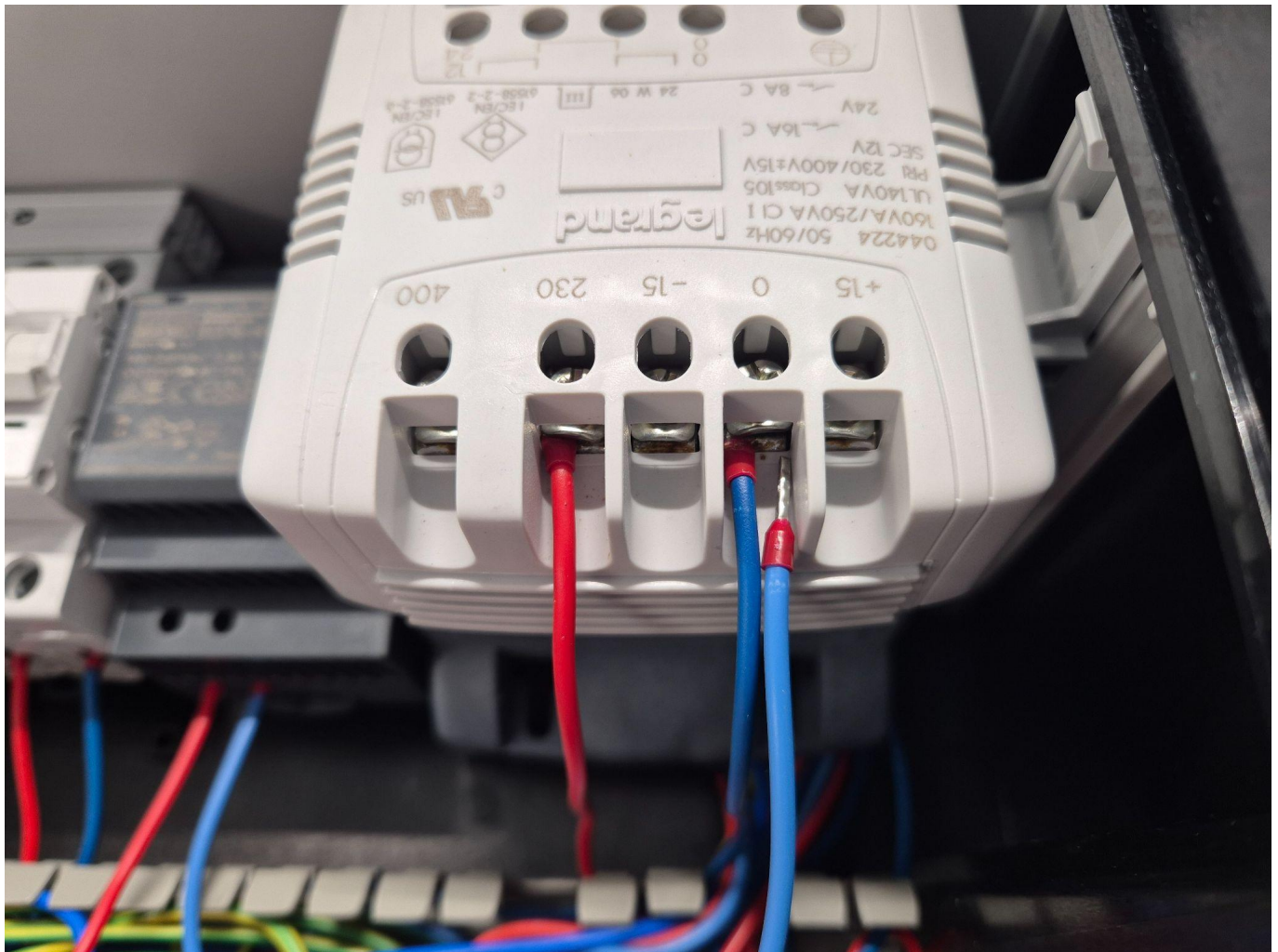


Route top wires from the power supply under transformer into the cable channel and connect them to terminal connectors.

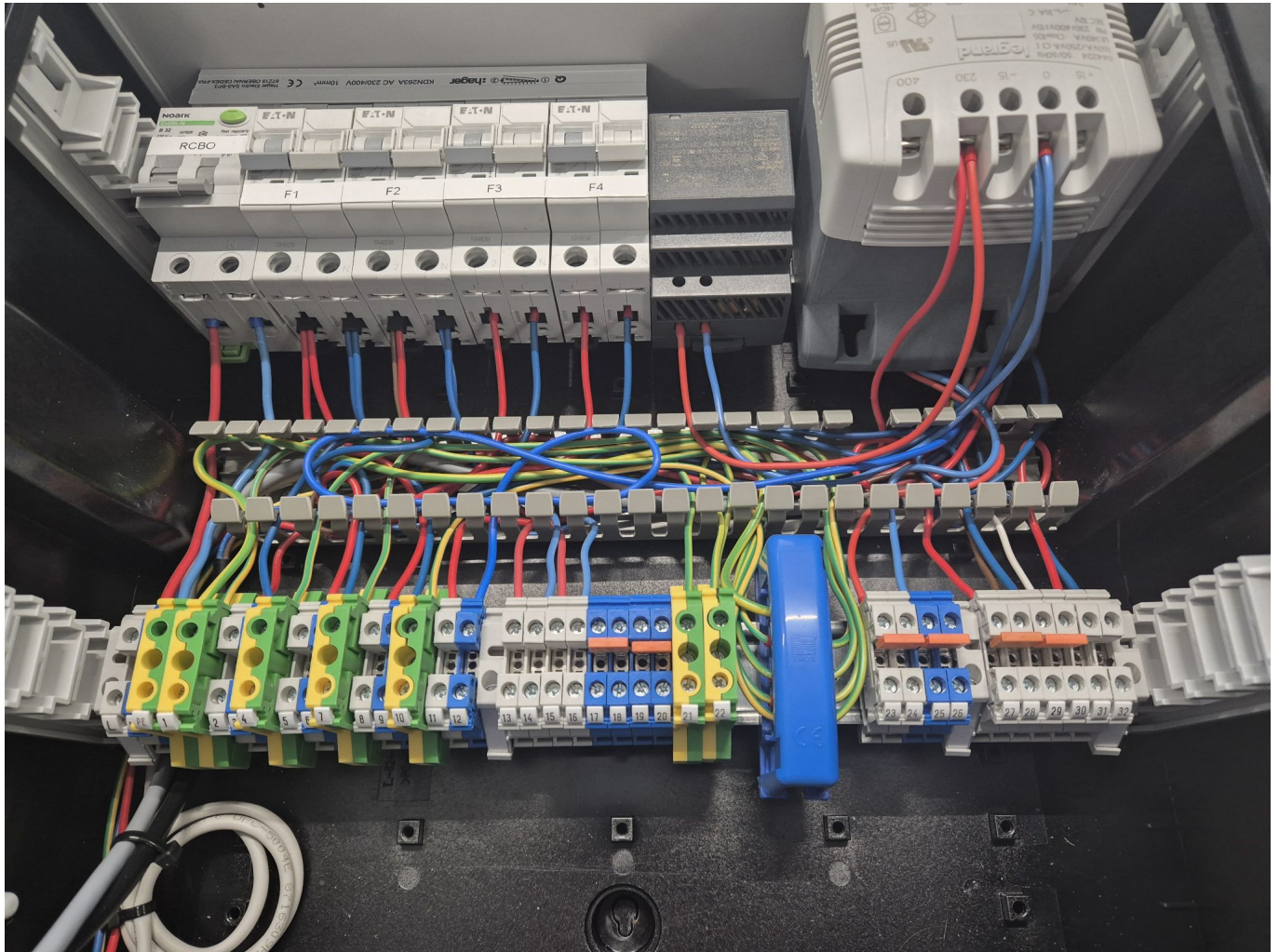
Red wire to number 23 and blue wire to number 25. Secure connection by screwing in top phillips head screw, like shown on photo above.



The next step is to loosen screw terminals on transformer 230 VAC marked as 230 and 0 without pulling wires out.

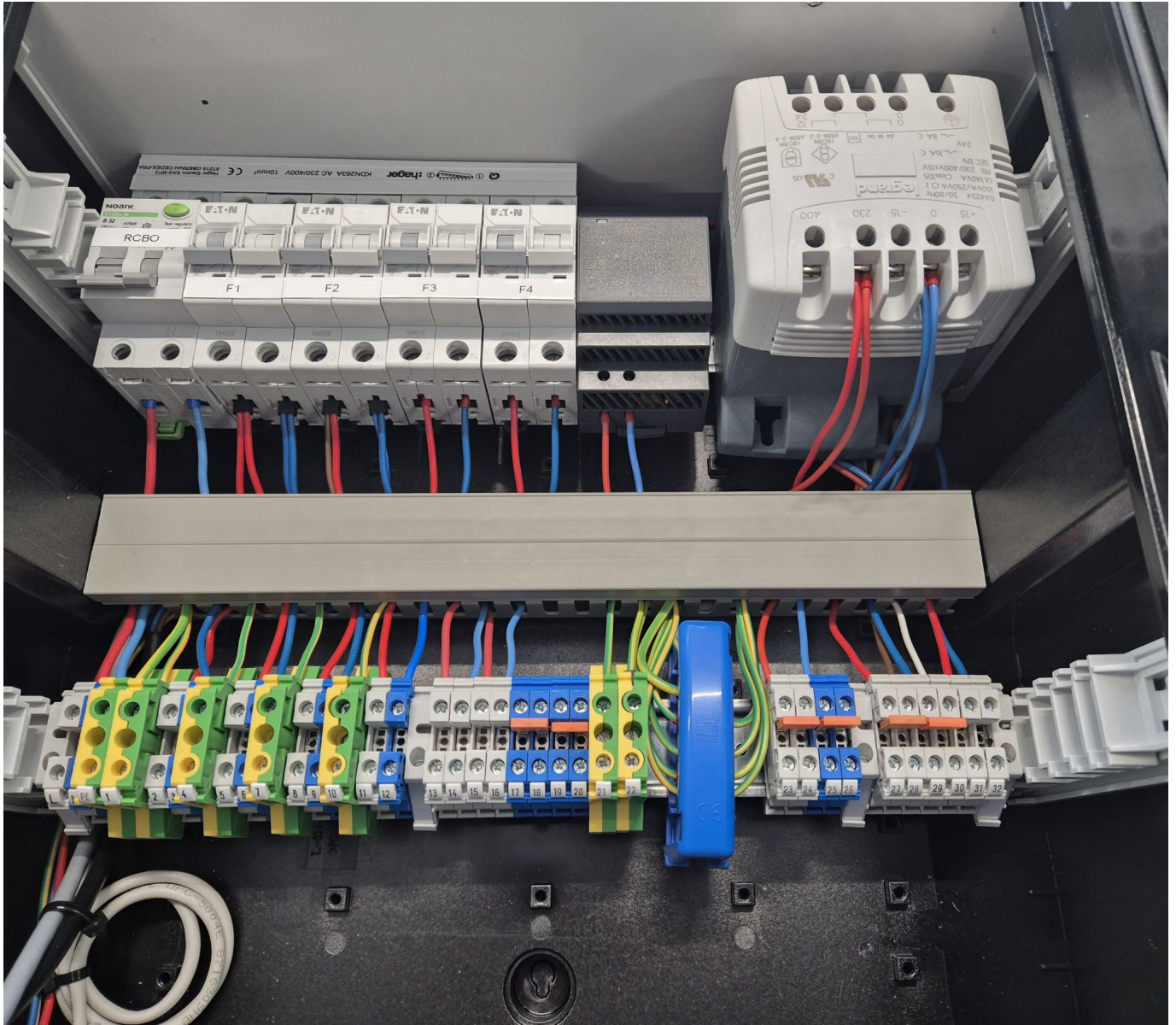


Connect wires coming out of the bottom of the power supply 230VAC to the transformer. Red wire to screw terminal marked as 230 and blue wire to terminal marked as 0. Secure connection by screwing in phillips head screw.

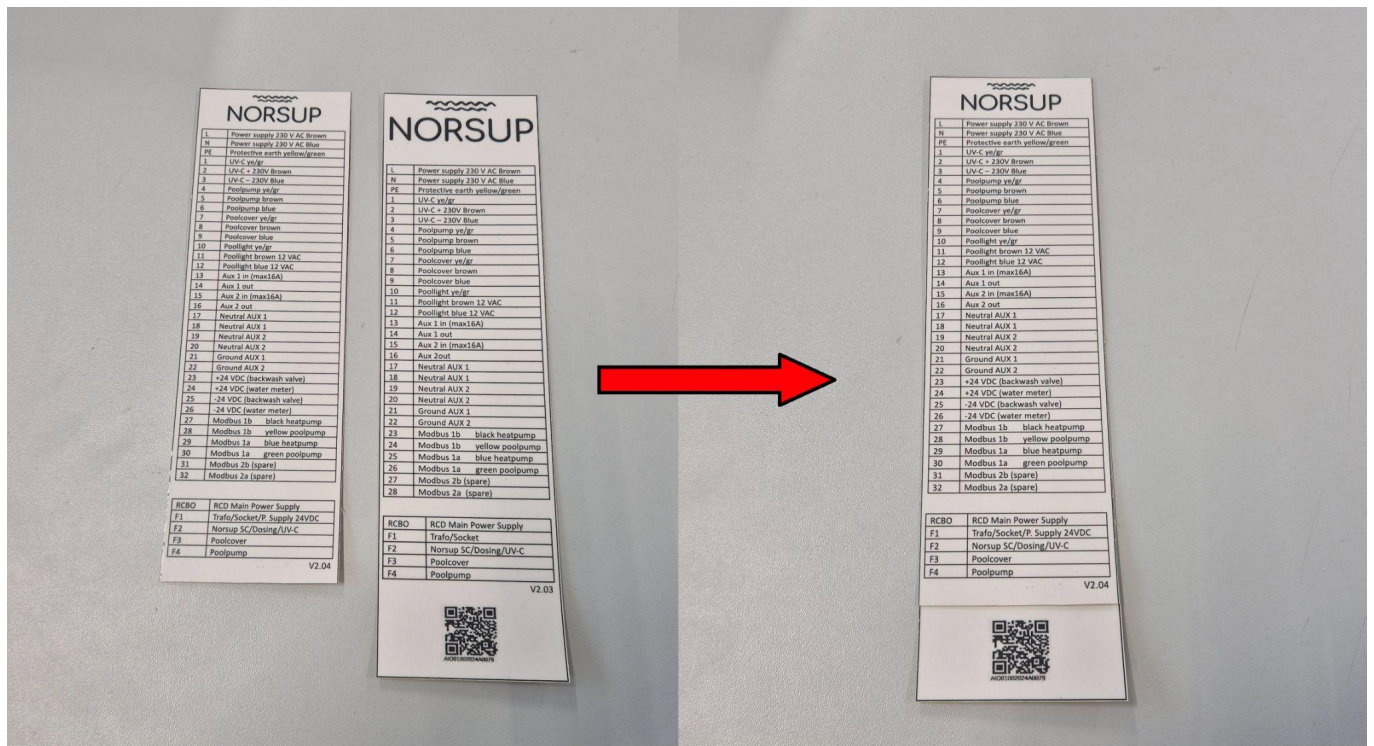


The next step is to route wires in the cable channel and close the lid.

Just like opening, by squeezing sides of the channel, lid can be pushed into place. Make sure no wires are in the way.



After all Norsup One Box should look like photo above.



New label is designed to be placed on top of old one with already applied adhesive.

Carefully peel off yellow side exposing glue.

While applying make sure to not cover qr code.